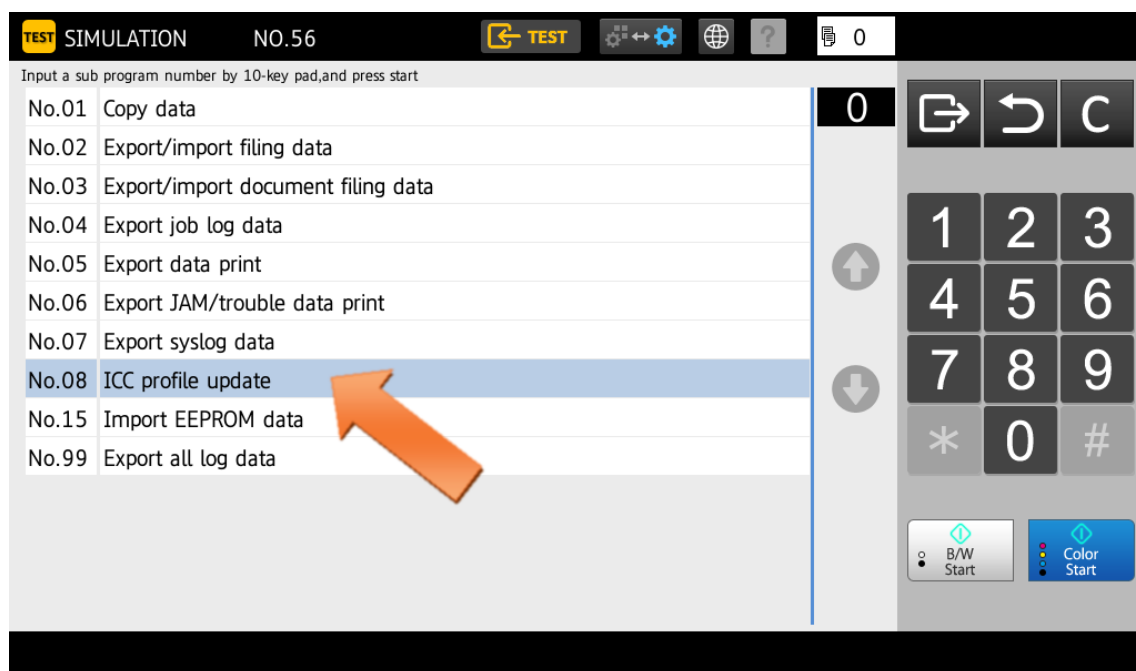
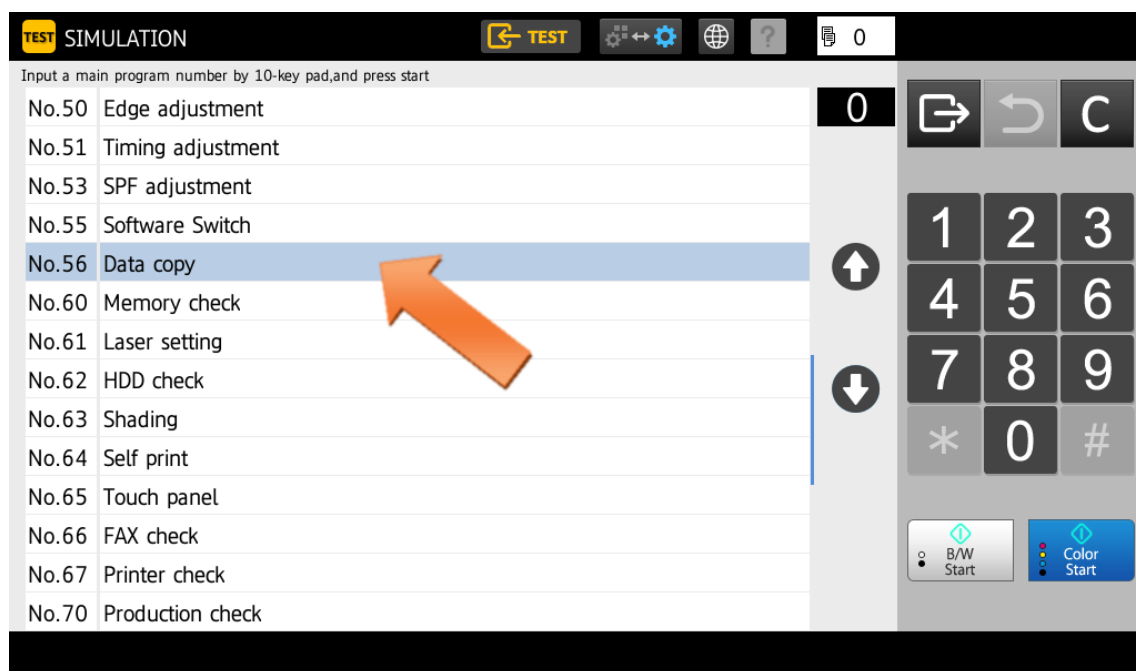


How to upload the Look-Up Table (LUT) on the MFP

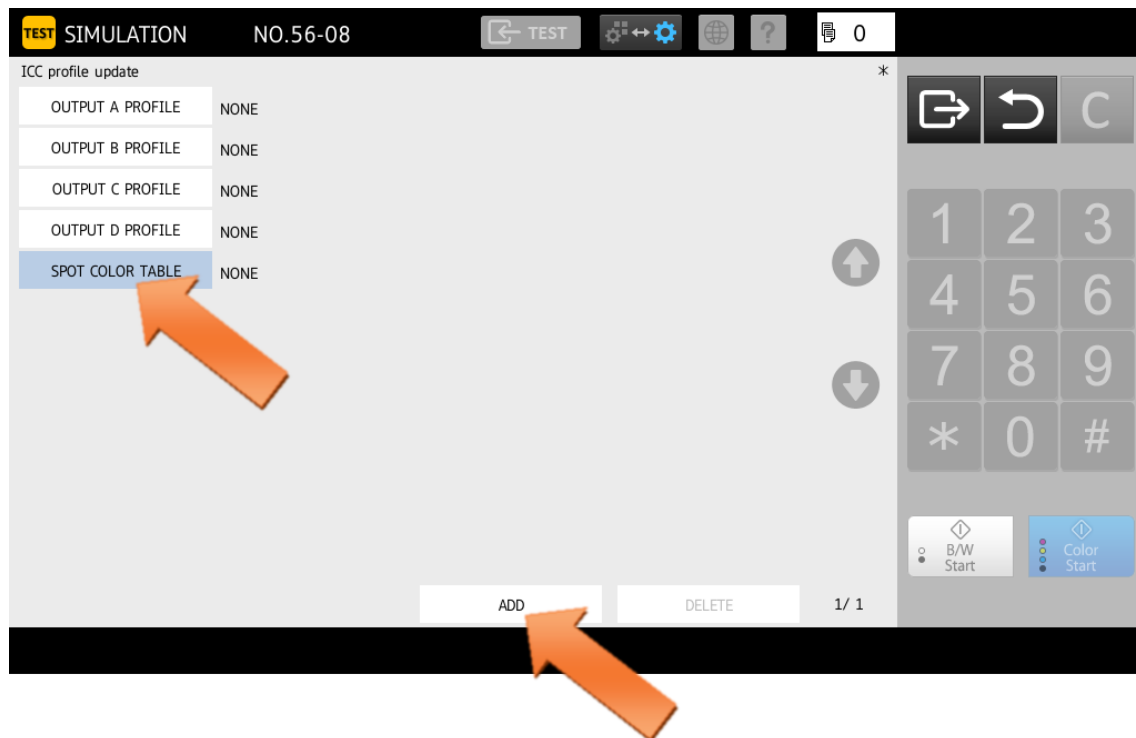
Detail of files

File Name	Description
• Color_Table_BP_70C30_70C65_50C26_50C65.txt	- Pantone color table for MFP upload
• PanCheckV1_A4.prn	- Check sheet A4 size
• PanCheckV1_LT.prn	- Check sheet Letter size

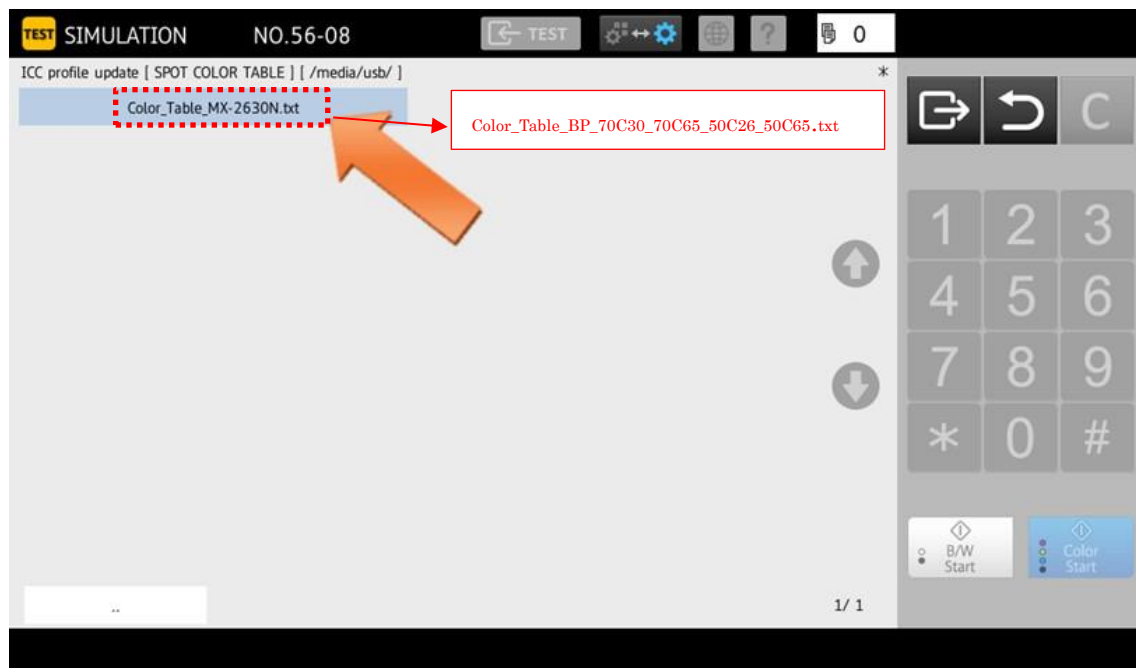
- 1) Save the above Pantone color table file in USB memory and insert it to MFP USB port.
- 2) Enter SIM56-08.



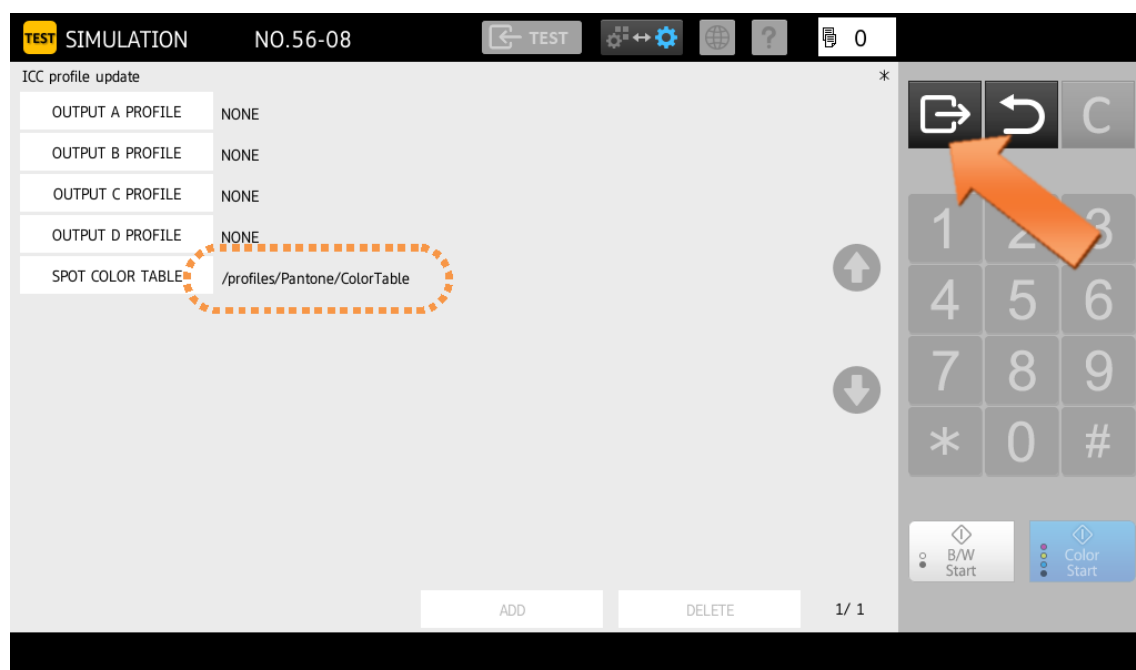
Tap "SPOT COLOR TABLE".



Files in the USB memory will be displayed. Select the Pantone table file.

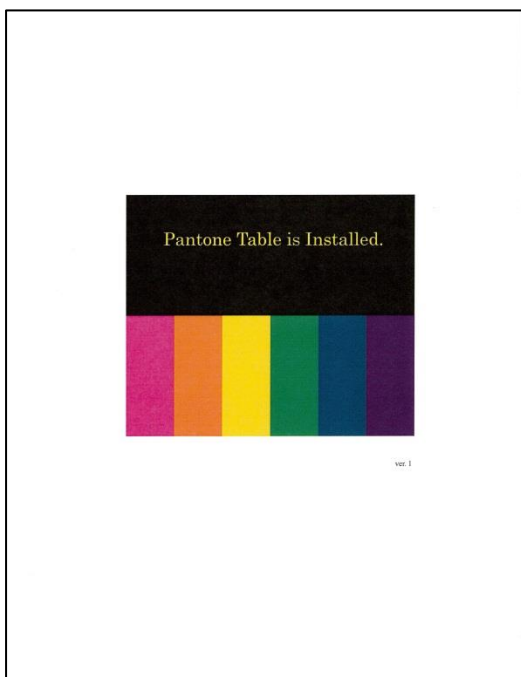


The registration completes when the message "/profiles/Pantone/ColorTable" is displayed under "SPOT COLOR TABLE".
The machine will reboot after you exit the Simulation mode.

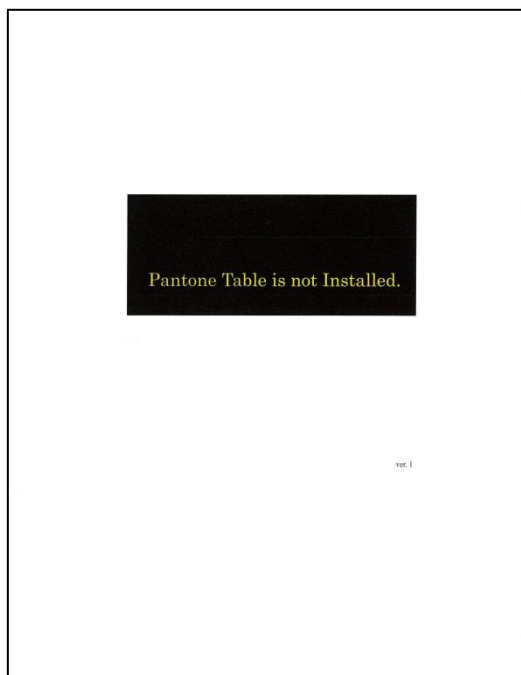


シミュレーションを終了しています...
Simulation finishing...
Simulation Verarbeitung...
Simulation finition...
simulación de acabado...

- 3) Print "Check file" from USB memory. If output is as below, LUT upload is complete.



If output is as below, upload is not complete. Check the procedure and try again.



- 4) To have the best image quality, it is recommended to calibrate the engine using SIM 46-74 (See service manual for detail). Or, for users, we recommend to calibrate the engine using "Auto Color Calibration."